

The information on this page/document may no longer be current and is provided for educational and historical purposes. **You should not rely solely on this information.**



NBNCo Limited

NBN Co Objectives

Coverage

- Provide a wholesale service that enables competition and innovation by service providers throughout Australia

Competition

- Offer open access and equivalence, creating a level competitive playing field for retail service providers
- Facilitate any to any connectivity
- Promote maximum end-user choice in terms of both services and providers

Cost effective

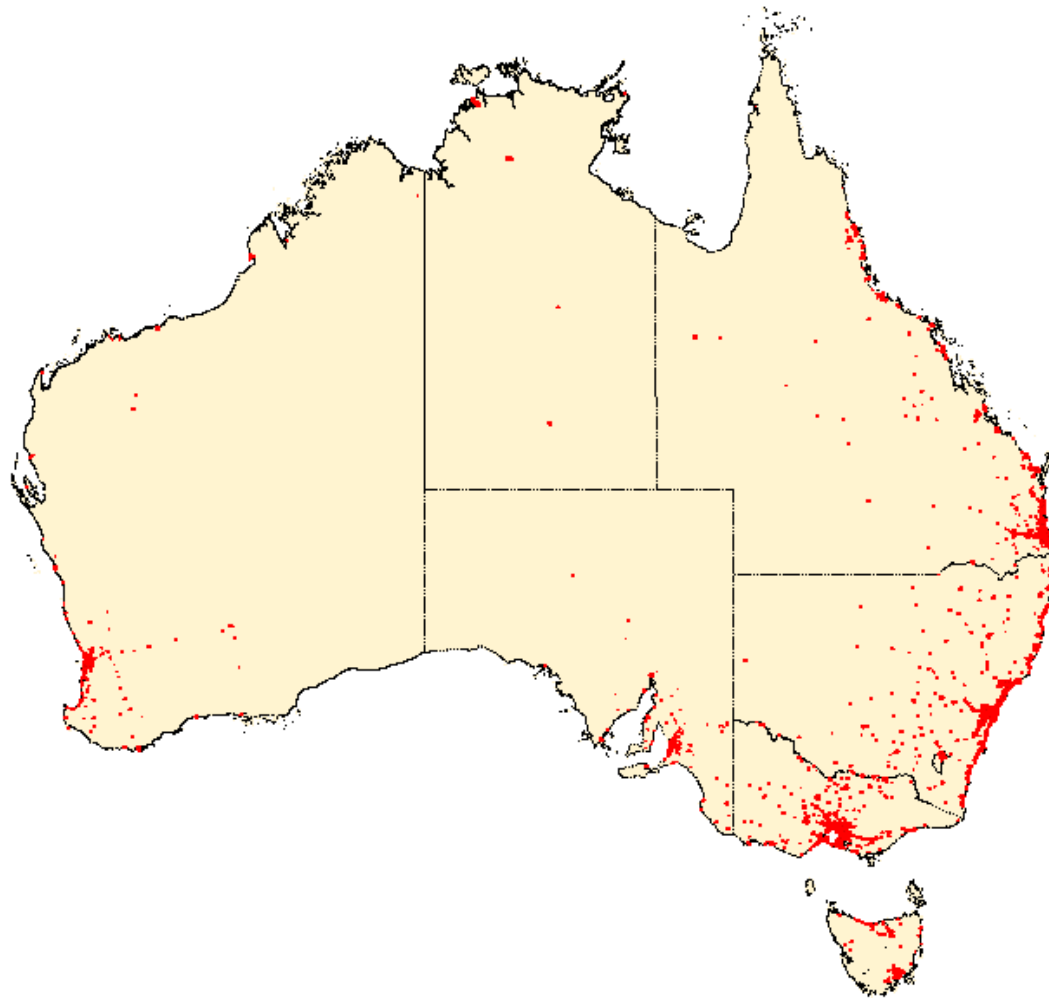
- Simplicity
- Focus on uncontested infrastructure

Customer care

- Deliver appropriate network reliability, resilience and security
- Allow secure simultaneous delivery of multiple applications with predictable levels of quality

The information on this page/document may no longer be current and is provided for educational and historical purposes. **You should not rely solely on this information.**

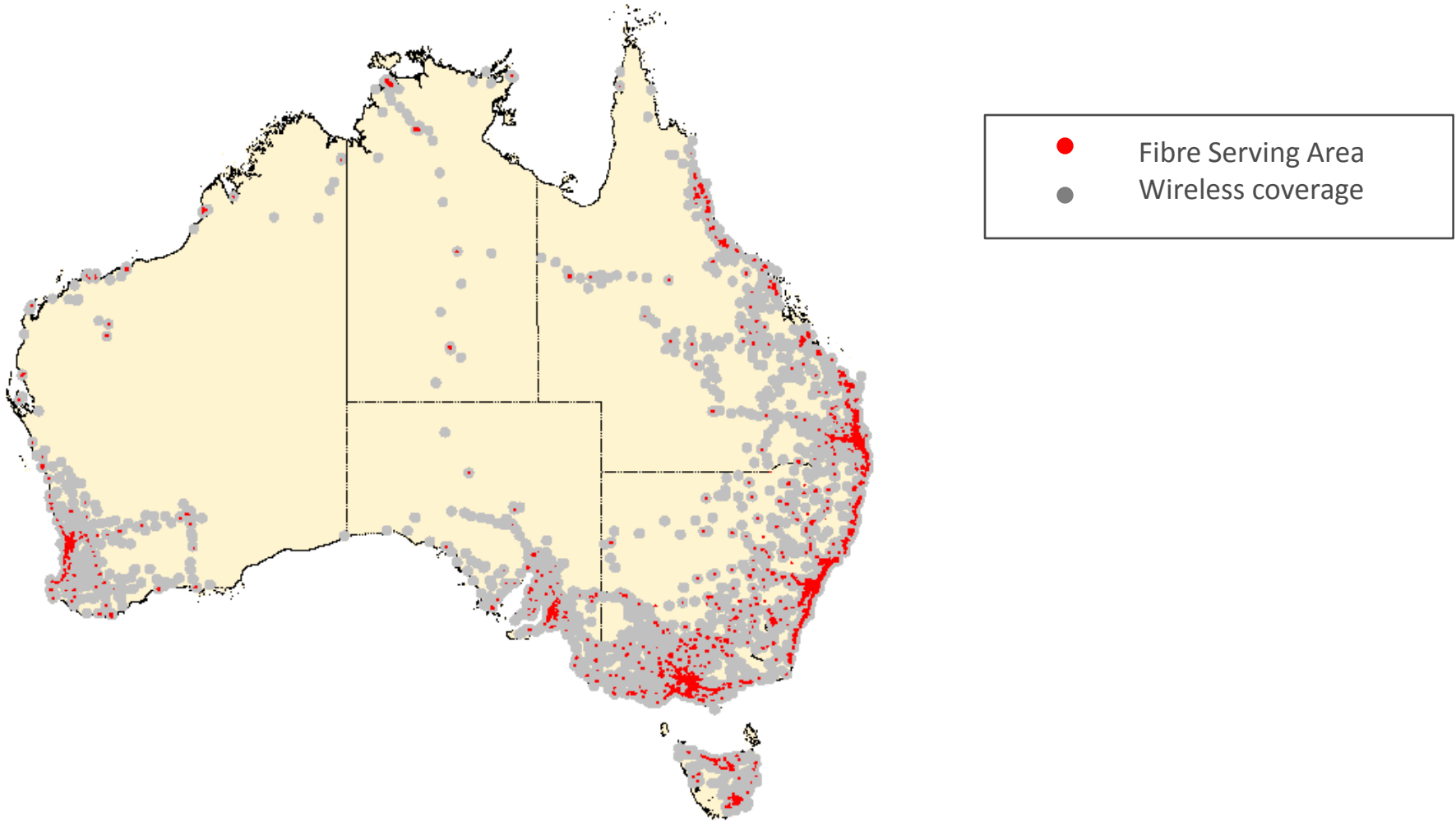
Australia – At least 90% Fibre Coverage



● Fibre Serving Area

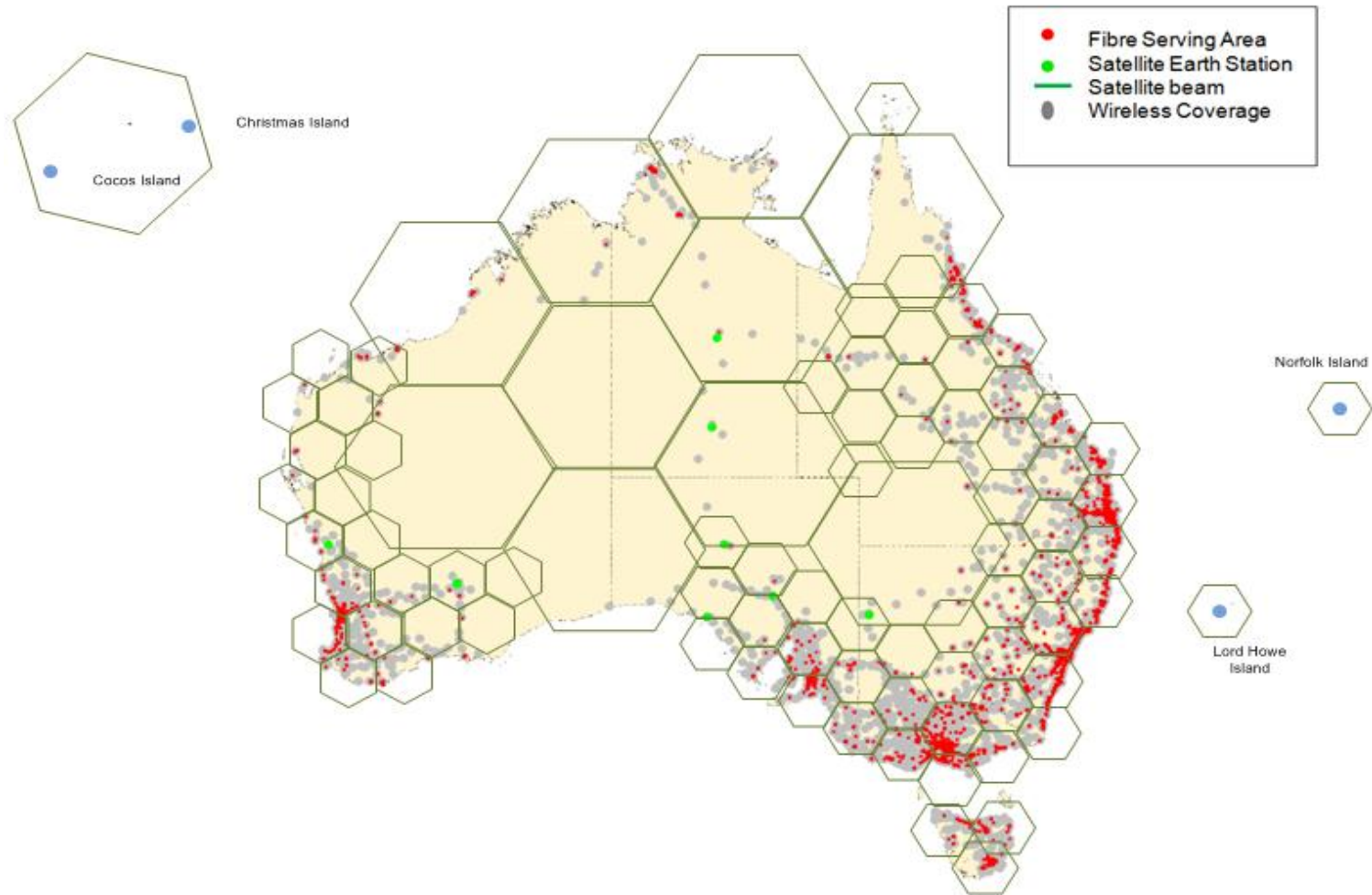
The information on this page/document may no longer be current and is provided for educational and historical purposes. **You should not rely solely on this information.**

Australia – wireless coverage



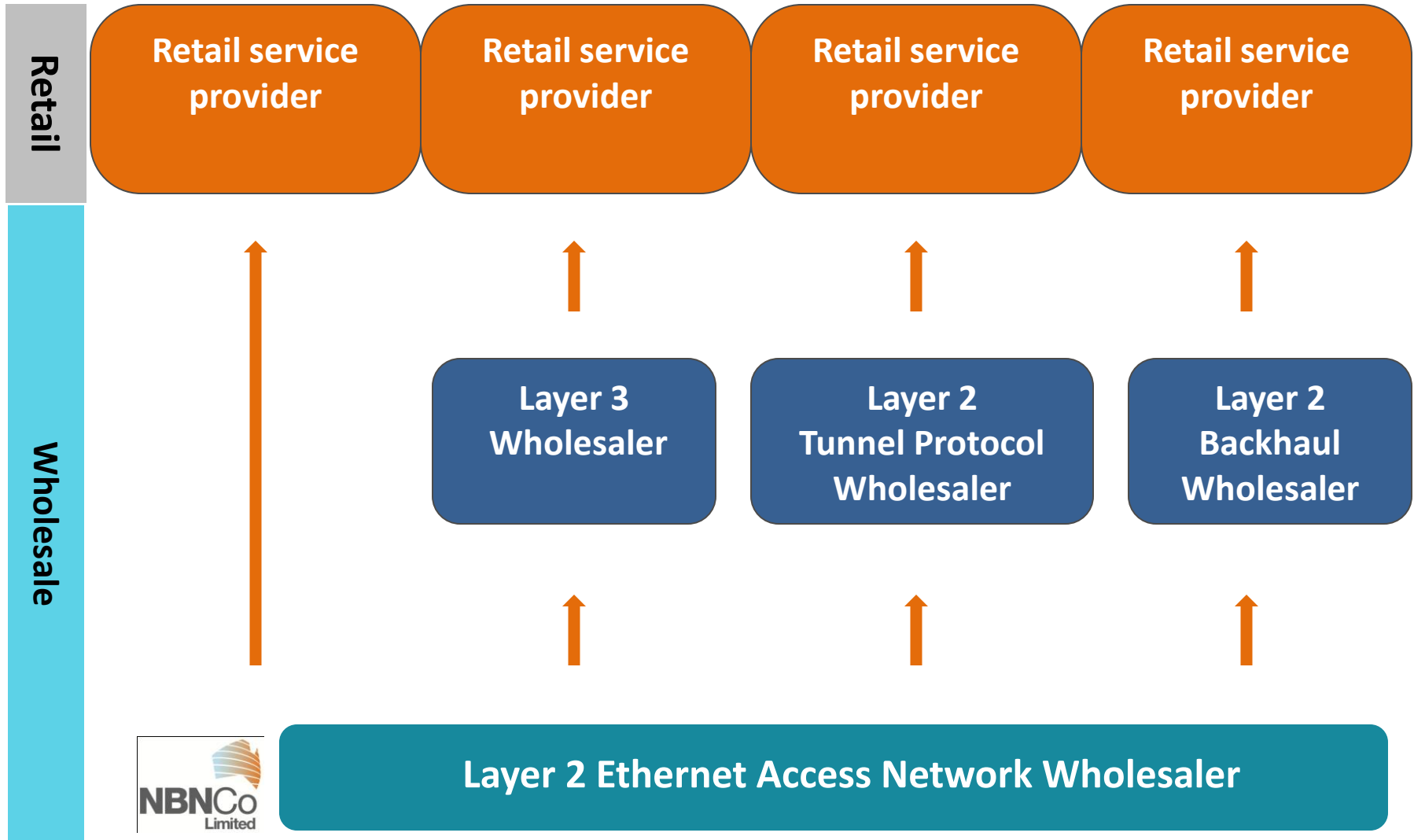
The information on this page/document may no longer be current and is provided for educational and historical purposes. **You should not rely solely on this information.**

Fibre network + wireless + satellite



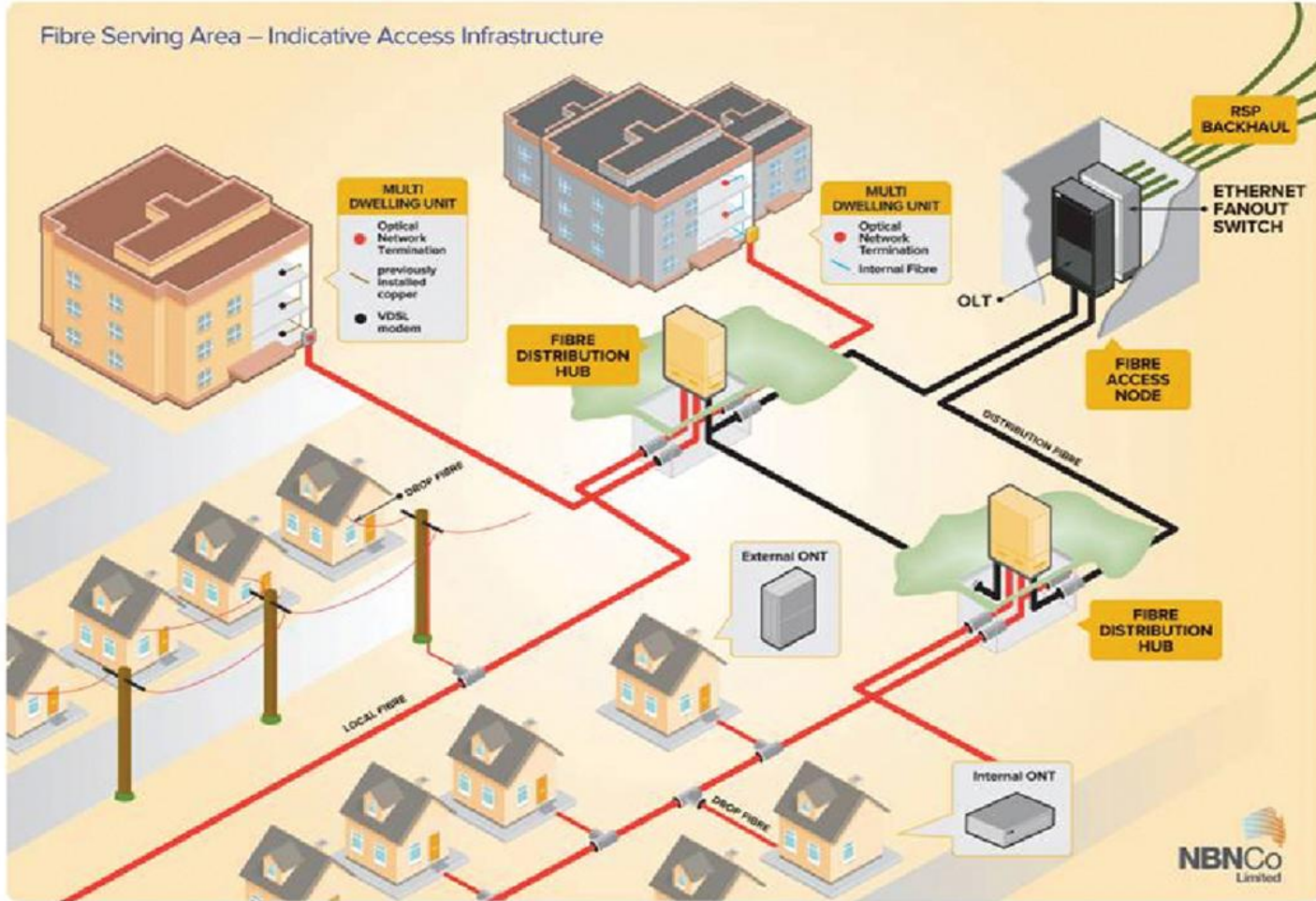
The information on this page/document may no longer be current and is provided for educational and historical purposes. **You should not rely solely on this information.**

A Diversity of Wholesale and Retail Business Models



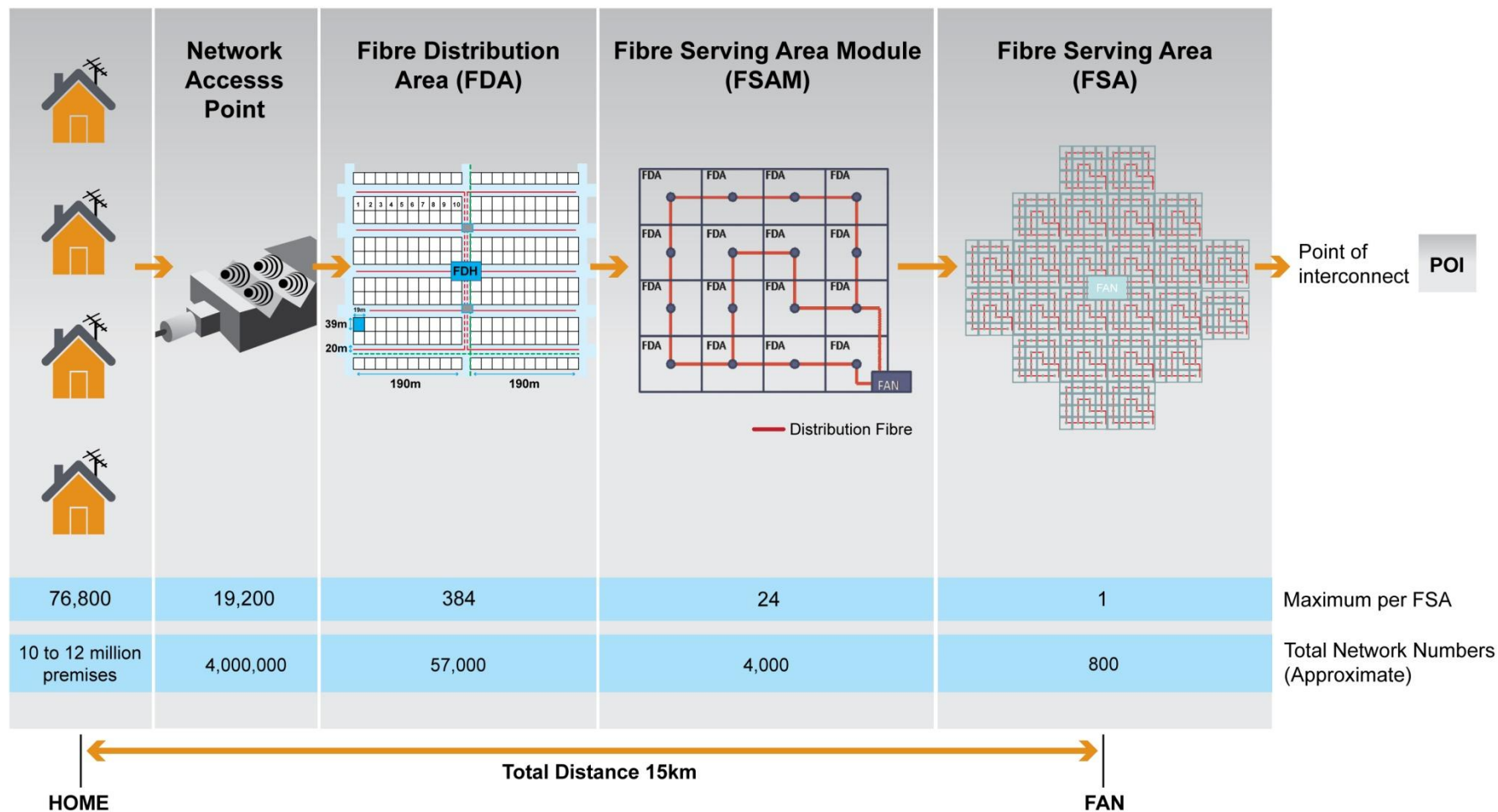
The information on this page/document may no longer be current and is provided for educational and historical purposes. **You should not rely solely on this information.**

Physical Infrastructure Representation



The information on this page/document may no longer be current and is provided for educational and historical purposes. **You should not rely solely on this information.**

Network dimensions – replicating modules



RSPs better support end user applications

Consumer

– Asymmetrical



High-speed internet

- bursty



IPTV

- streaming
- constant
(committed rates)



VOIP

- constant
(committed rates)

Business

– Symmetrical

– Business critical connection

– Service level guarantee



Backup of data



Software-as-a-Service



High-definition voice
and video conferencing



Online collaboration
with remote workers

Industry – eg health

– Symmetrical

– Business critical connection

– Service level guarantee

– Ubiquitous



Online consultations
eprescribability



Remote diagnosis of
electronic medical images



In-home monitoring of
elderly-chronic disease
sufferers

The information on this page/document may no longer be current and is provided for educational and historical purposes. **You should not rely solely on this information.**

Tasmania Rollout

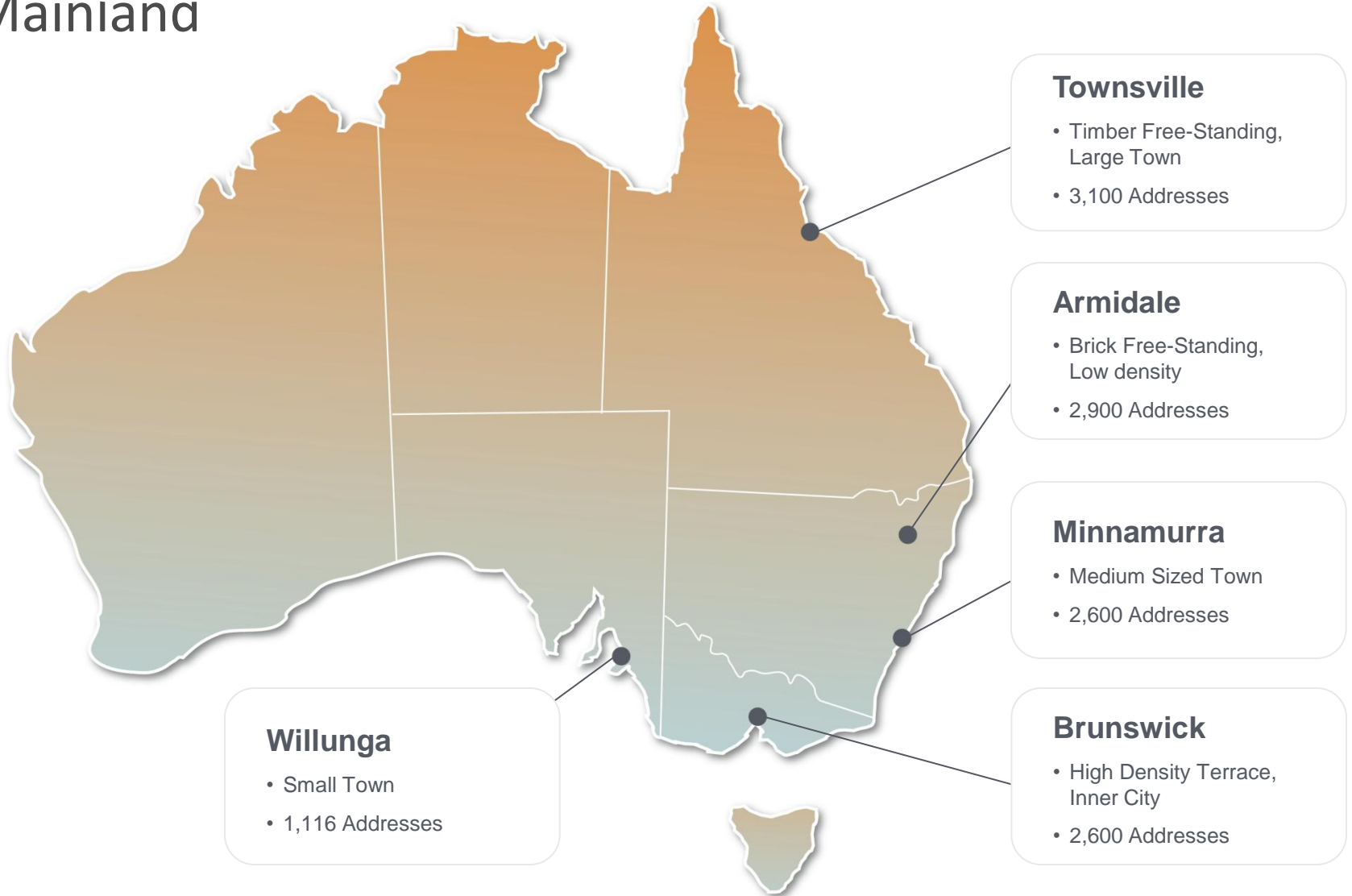


Stage 1	Midway Point	Scottsdale	Smithton
Stage 2	Deloraine Sorell Triabunna	George Town South Hobart	Kingston Beach St Helens
Stage 3	Burnie Acton Brooklyn Burnie Cooe Downlands Hillcrest Montello Ocean Vista Parklands South Burnie Upper Burnie Devonport Devonport East Devonport	Hobart Bellerive Derwent Park Dowsing Point Glebe Glenorchy Goodwood Hobart Howrah Kingston Lindisfarne Lutana Montagu Bay Montrose Mornington Mount Stuart North Hobart Queens Domain Rose Bay Rosny Rosny Park South Hobart Warrane West Hobart	Launceston East Launceston Invermay Kings Meadows Launceston Mowbray Newstead Norwood Prospect Punchbowl Relbia South Launceston Summerhill Trevallyn Waverley West Launceston Youngtown

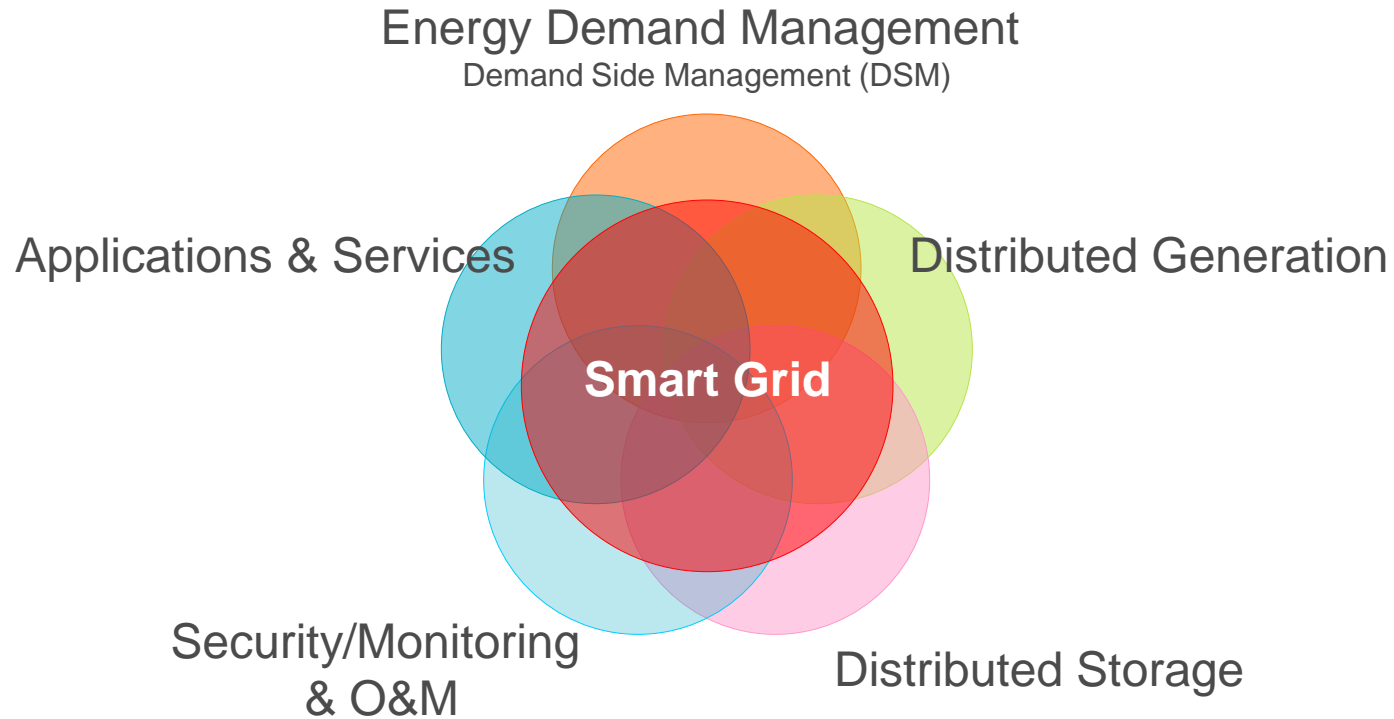
Stage 1+2+3 = 100,000 premises

First Rel on Mainland

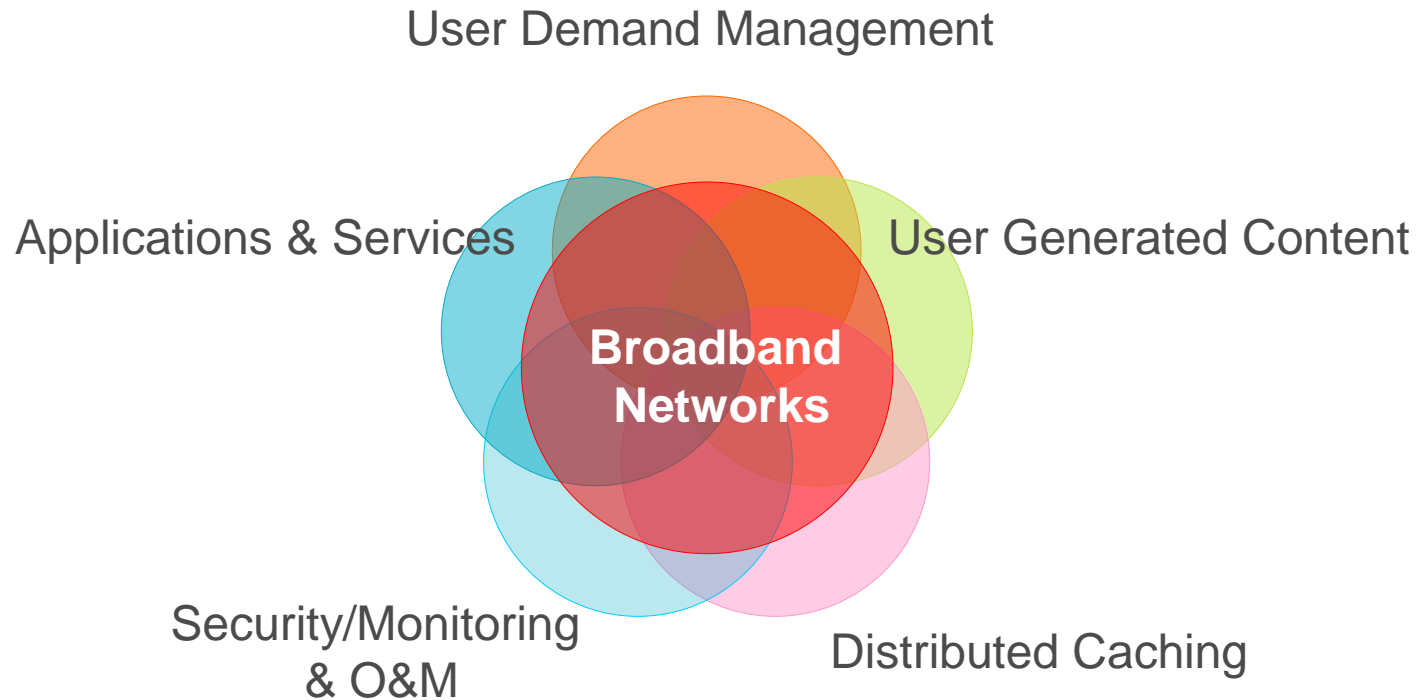
The information on this page/document may no longer be current and is provided for educational and historical purposes. **You should not rely solely on this information.**



Energy Sector Evolution



Telecommunications & IT Sector EVOLUTION



Opportunities for Synergy

Sharing Facilities / Resources

- Existing Infrastructure (Aerial / Underground)
- Planned upgrades
- Workforce optimisation

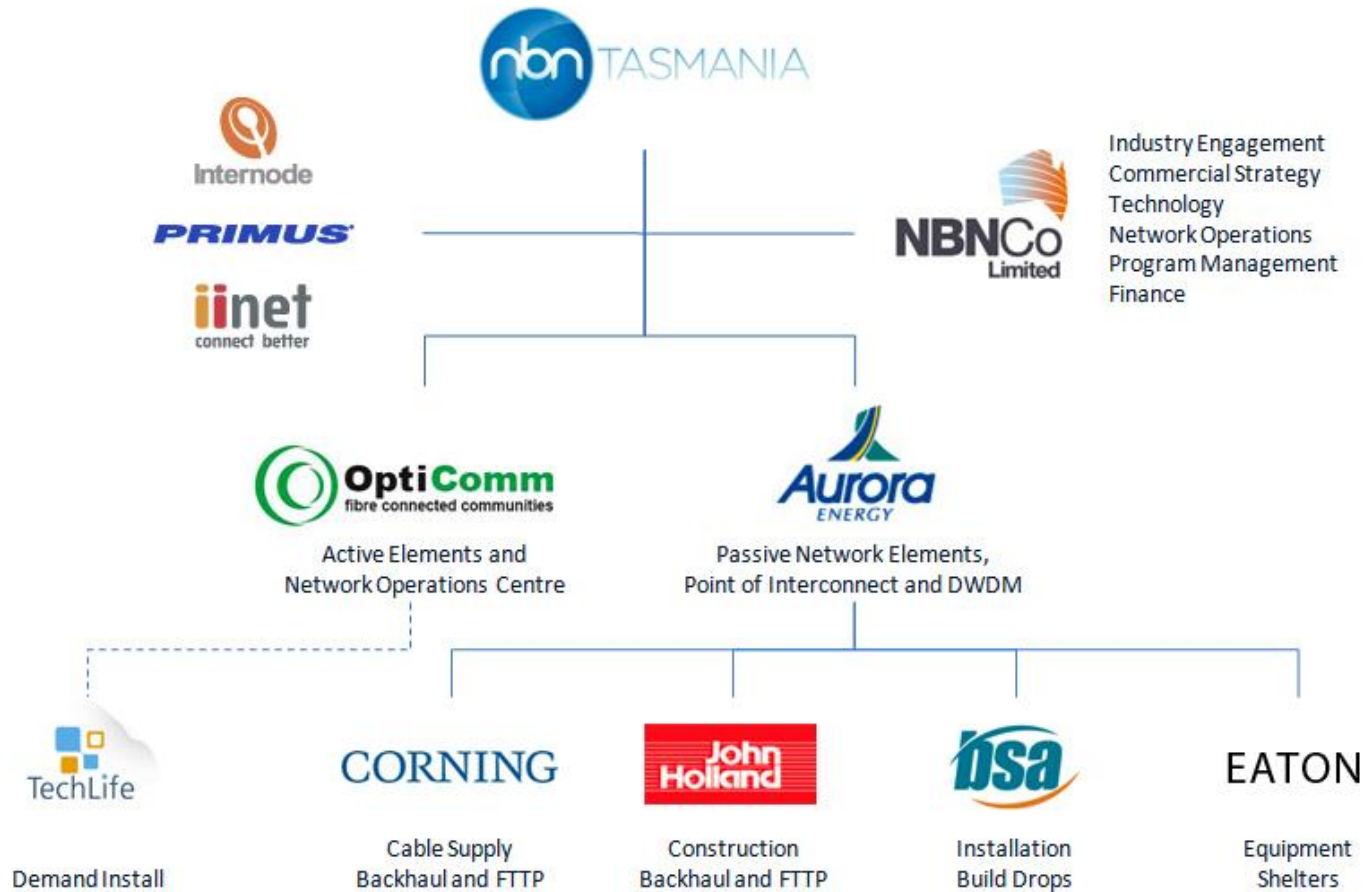
Customer Premise Co-ordination

- Joint installation
- Power Supply
- Smart devices (meters, network termination, routers)

Ubiquitous Connectivity

- Geographic coverage
- High availability and scalability
- Common interfaces / standards

The information on this page/document may no longer be current and is provided for educational and historical purposes. **You should not rely solely on this information.**



Generating new jobs in Tasmania

The information on this page/document may no longer be current and is provided for educational and historical purposes. **You should not rely solely on this information.**

Tasmanian works underway – Australia as agent



The information on this page/document may no longer be current and is provided for educational and historical purposes. **You should not rely solely on this information.**



NBNCo Limited